



ArcelorMittal

Arval

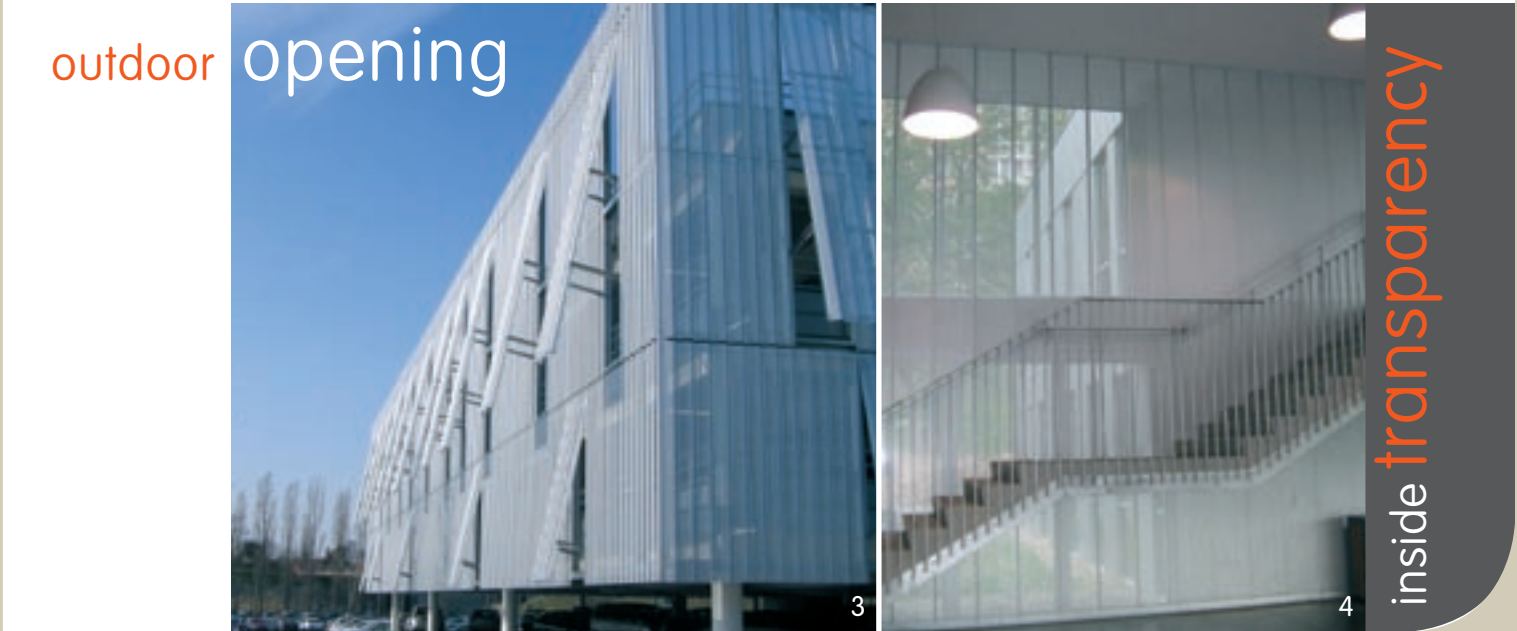
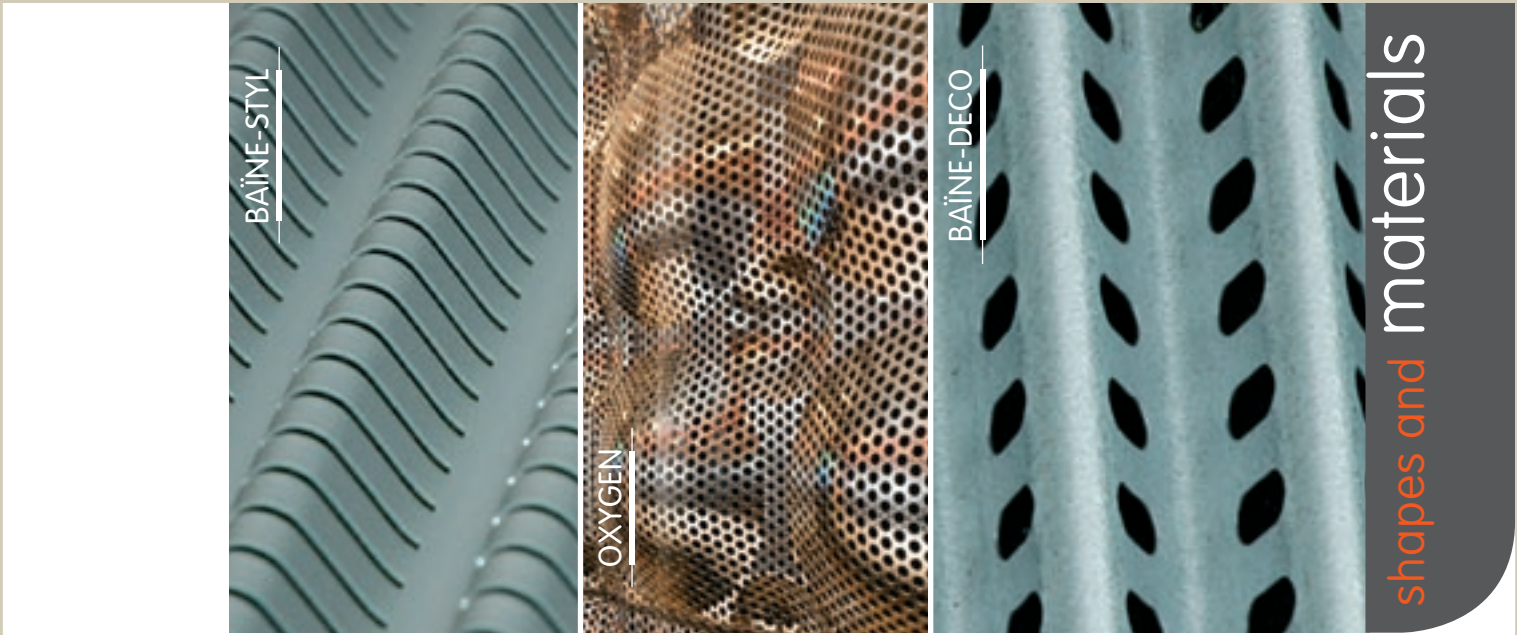
Sunstyl



A fresh look
at sun screens



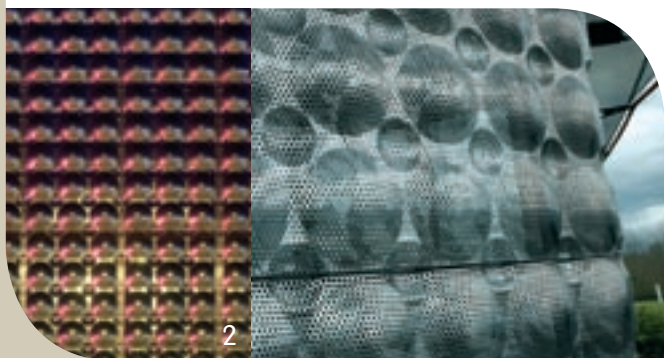
Imagine architecture that changes hour by hour, day and night. Season by season, discover a new vision of comfort where Nature's brightness is brought inside for your well-being. Architecture that invites light to design a transient decor between the play of shadows and light, colours and transparency. Freedom of shape, colour and appearance: take a fresh look at our sun screens which we have created as a prism for your creative areas. Welcome to Sunstyl technique and its environmentally-friendly solutions.



Arval



OXYGEN



" capturing space
and minds "

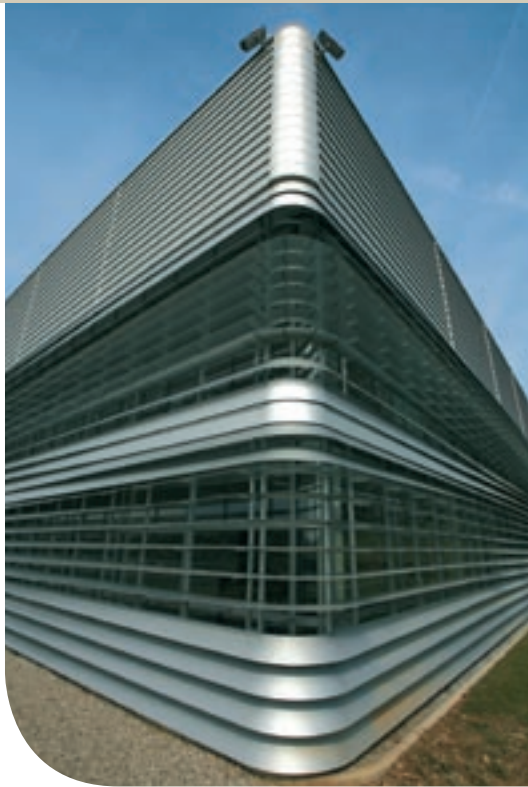
1-2. Grand Place Shopping Center in Grenoble - Architect: SCAU - Photographer: Bruno Delamain - 3-5. Les Argoulets Parking Garage in Toulouse - Architect: Agence Azema - Photographer: Claude Abron - 4. Erève in Rennes - Architect: Lanôtre/Courrian and Poggi Architecture - 6. Sophysa - Architect: Agence d'architecture Maitra - Photographer: JF Chapuis - 7. Beuvry-la-Forêt Middle School - Architect: Parallèle III, Mr Noyer - 8. IRR in Nancy - Architect: Agence Brunel Saunier

MASCARET



Sunstyl _____ Spectacular solutions

HELICE



6

With genuine alchemy between metal and light, our spectacular solutions highlight steel's flexibility to create one-of-a-kind visual atmospheres. Far removed from architectural standards, each creation attracts the gaze and invites the sun to sublimate the interior space with its shadows.

ECUME SOLAR



ECUME



7



8

Arval



LUMIERE



STEREL

1. Centre hospitalier in Arras - Architect: Architecture Studio - 2. Ecole des Mines in Albi - Architect: Architecture Studio - 3. EBPSS Rouen - Architect: W. Eberhard - Buffi Associés - 4. Hôpital Purpan in Toulouse - Architect: Serge Zilio - 5-6. Nîmes Toyota Centre - Architect: Cabinet Copy and Joulia - Photographer: Paul Robin - 7. Pailleron Swimming Pool - Architect: Marc Wimram - 8. Rosador Produce Market in Bordeaux - Architect: Guilbert - 9. Citroën Marseille - Architect: Cabinet Copy and Joulia - Photographer: Paul Robin

Sunstyl _____ Creative solutions

TYREX



7



Offering freedom of shape, colour and material, Sunstyl highlights your creativity. Whether for construction or renovation, discover our easy-to-install solutions, suited to all of your technical and architectural challenges.

MISTRA



HALO

8



9

Arval



ANDROMED



LUBERO



Sunstyl _____ Traditional solutions



SORMIO

Whether for façades or overlay roofs, our traditional steel solutions combine design with flexibility of use. From the creation of an entire building to the enhancement of a showroom, Sunstyl sublime space with its contemporary and timeless signature.

ENVA



Sunstyl Systems

OXYGEN



Oxygen is a 3d panel designed as sunscreen to obtain the most spectacular effects.

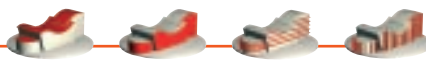
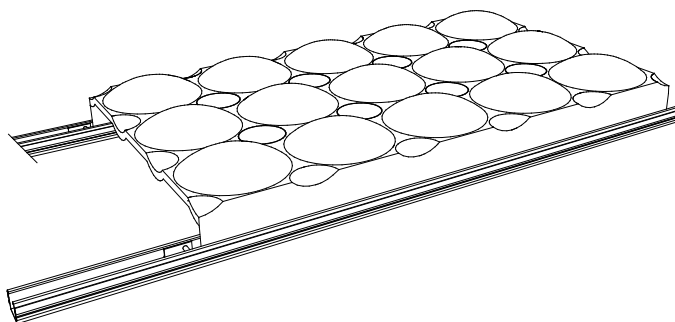
Panel dimensions: 1343 mm x 817mm.

A varied perforation percentage is available.

Panels are attached to the façade through a secondary structure specially adapted for this product for a quick and safe installation.

Materials:

- Stainless steel in matt, brushed or gloss aspect.
- Other materials by request.



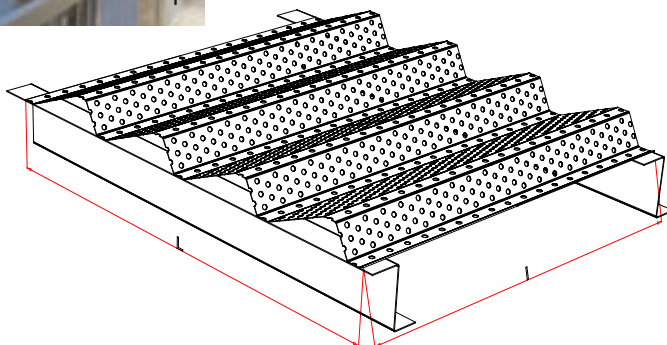
MASCARET

Mascaret is a classical Sunstyl system that can be manufactured with different percentages of perforations; from 13 to 27%.

Maximum dimension standard: 3950 mm x 910 mm

Materials:

- Stainless steel in matt, brushed or gloss aspect
- Coated steel
- Aluminium



Pictogram legends



Roof sun screen



Façade sun screen



Horizontal façade sun screen



Vertical façade sun screen

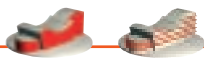
Contact us for more detailed description.

In the context of pollution risks or particular environment, we have an **ENVIROMENTQUESTIONNAIRE** for you to fill in prior any study.

Sunstyl _____ Spectacular solutions



HELICE



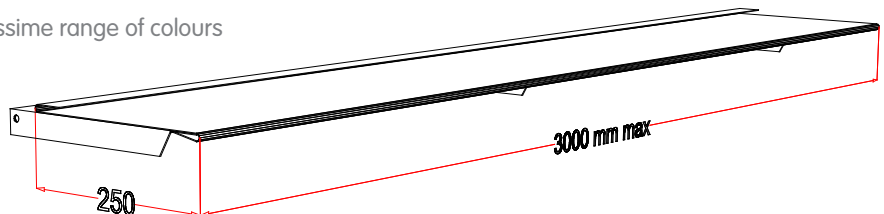
The latest concept in Sunstyl; Innovation is at your service. The product can be formed and sculpted to obtain curves, modifying the angle of inclination from vertical to horizontal.

The product is suitable to be used for an opaque façade transforming into a sun screen system.

Maximum dimension standard: 3000 mm x 250 mm.

Materials:

- Stainless steel in matt, brushed or gloss aspect.
- Coated steel sheet according with the colorissime range of colours
- Aluminium



ECUME



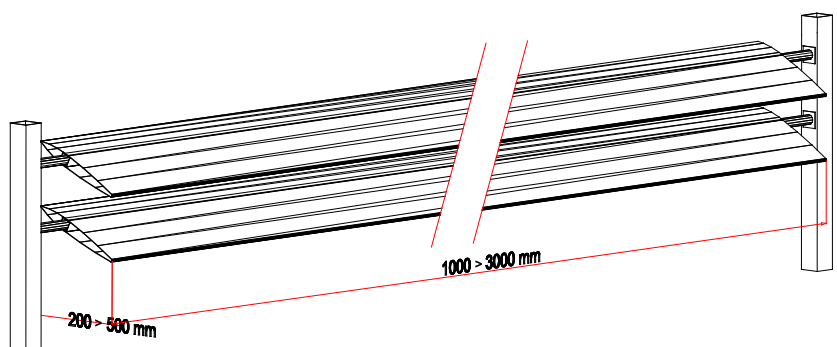
Slats Sunstyl system; there are three possibilities of supplying Ecume:

Fixed, motorized and with photovoltaic cells for production of electricity.

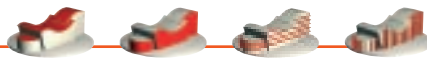
Maximum dimension standard: 3000 x 500 mm

Materials:

- Aluminium
- Other materials by request.



Sunstyl Systems



ST LUMIERE

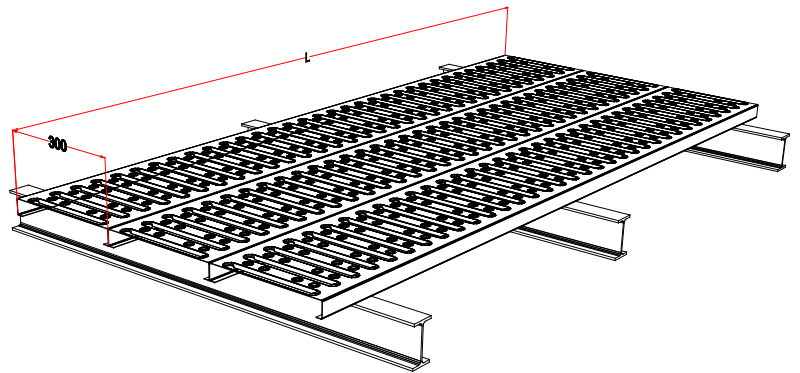


ST Lumiere is designed to be fixed on a metallic secondary structure.

Maximum length: 6 m.

Materials:

- Stainless steel in matt, brushed or gloss aspect
- Coated steel
- Aluminium



STEREL



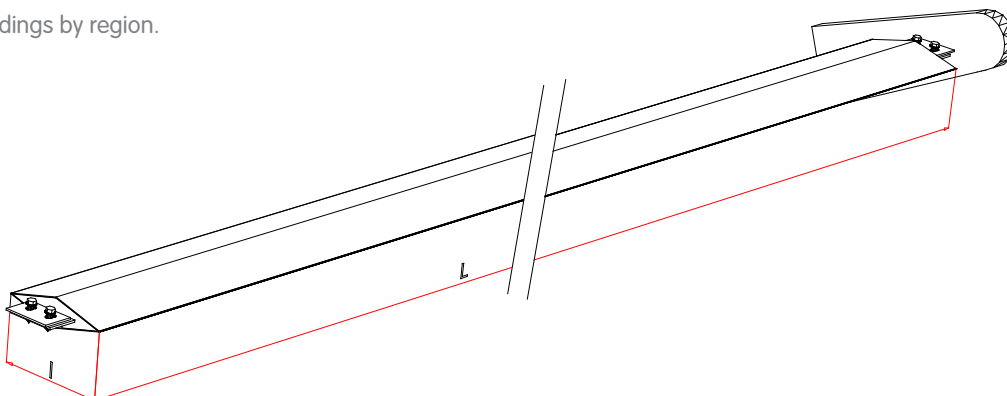
Slat Sunstyl system, Sterel is designed to be used for cornice applications. The system is a complete solution and it includes all necessary accessories and the secondary structure.

Maximum dimensions: • 4 m length and 270 mm width

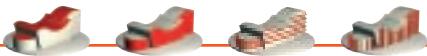
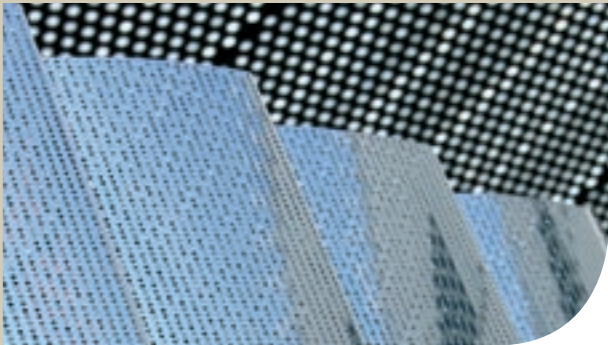
- Other dimensions by request

Materials: Steel sheet lacquered according Colorissime colorchart.

Consult us for the recommended span according to specific loadings by region.



Sunstyl Creative solutions



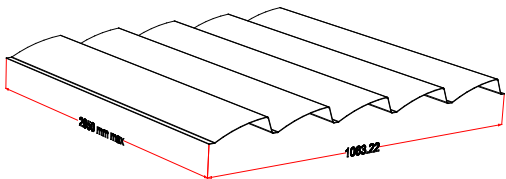
TYREX

Tyrex is an innovative Sunstyl system that allows for building design to be clearly differentiated.

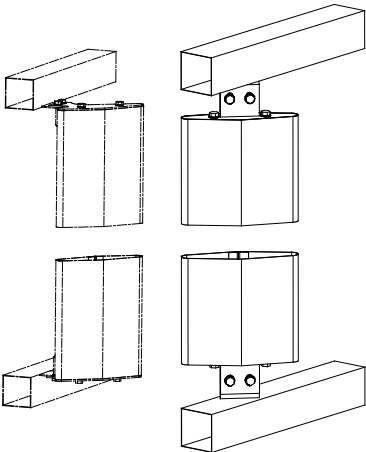
Dimensions: 2950 mm x 1050 mm

Materials:

- Aluminium
- Other materials by request.



MISTRA



Slat Sunstyl system, Mistra is designed to be used in cornices, in front of windows and along the façade.

The system is a complete solution and it includes all necessary accessories and the secondary structure.

Maximum dimensions: • 4 m length and 270 mm width

- Other dimensions by request

Materials: Steel sheet lacquered according Colorissime colorchart.

Consult us for the recommended span according to specific loadings by region.



3

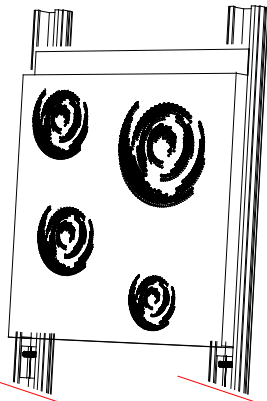


HALO

Halo is produced from a panel that can be personalized in accordance with your own design. This system can be combined with a non-perforated system to complete the personalization of the façades.

Materials:

- Stainless steel in matt, brushed or gloss aspects.
- Coated Steel sheet
- Aluminium



The dimensions of the product are:

STEEL		ALUMINUM	
Length	Width	Length	Width
100 to 1100 mm	100 to 3000 mm	100 to 1370 mm	100 to 3000 mm
100 to 3000 mm	100 to 1100 mm	100 to 3000 mm	100 to 1370 mm

Sunstyl Systems

ANDROMED



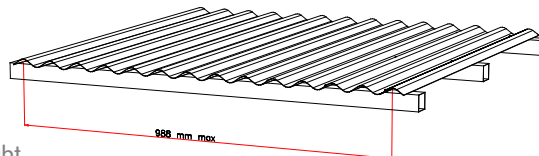
Andromed is designed and developed to be fully integrated with non-perforated façades and windows. The percentage of light transmission can be adapted to the design of the building.

Contact us for the full range of possibilities that we can supply.

Dimensions: Andromed can be supplied from 2 to 12 m length.

Materials:

- Stainless steel in matt, brushed or gloss aspect.
- Coated steel
- Aluminium



LUBERO

Slat Sunstyl system, Lubero is designed to be used in cornices, in front of windows and along the façade.

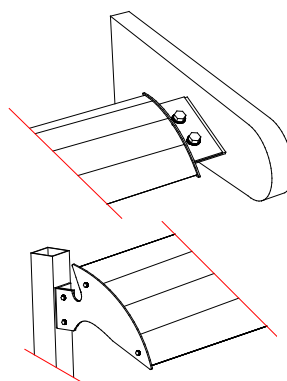
The system is a complete solution and it includes all necessary accessories and the secondary structure.

Maximum dimensions: • 4 m length and 270 mm width

- Other dimensions by request

Materials: Steel sheet lacquered according Colorissime colorchart.

Consult us for the recommended span according to specific loadings by region.



SORMIO

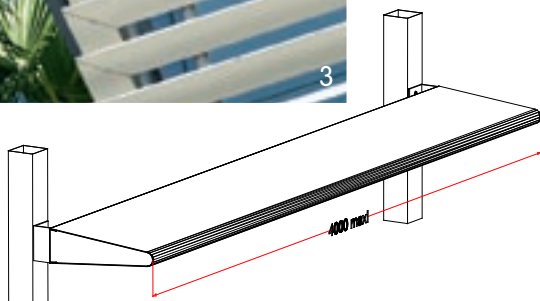
Slat Sunstyl system, Sormio is designed to be used in front of the windows and along the façade. The system is a complete solution and it includes all necessary accessories and the secondary structure.

Maximum dimensions: • 4 m length and 270 mm width

- Other dimensions by request

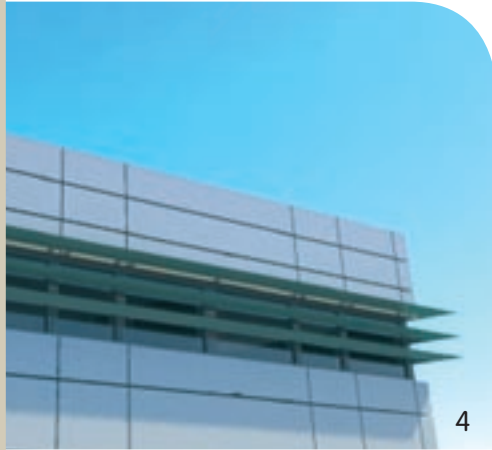
Materials: Steel sheet lacquered according Colorissime colorchart.

Consult us for the recommended span according to specific loadings by region.



Sunstyl _____ Traditional solutions

ENVA



4

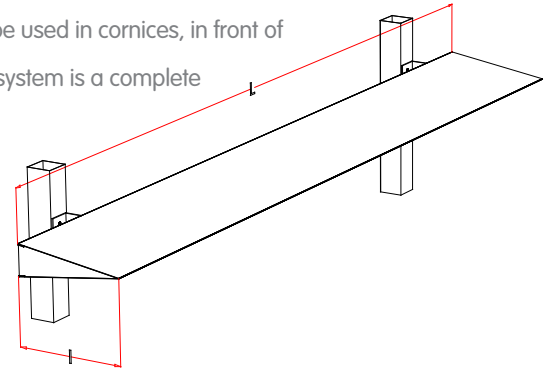
Slat Sunstyl system, Enva is designed to be used in cornices, in front of the windows and along the façade. The system is a complete solution and it includes all necessary accessories and the secondary structure.

Maximum dimensions:

- 4 m length and 270 mm width
- Other dimensions by request

Materials: Steel sheet lacquered according Colorissime colorchart.

Consult us for the recommended span according to specific loadings by region.



HAIRPLAN DECO

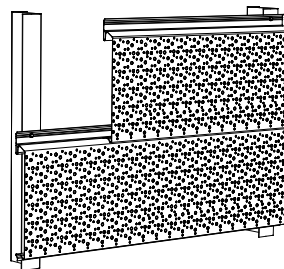
Randomly perforated system producing a cloudy effect is the proposition.

The differing dimensions of the holes delivers a fashioning system for our façades.

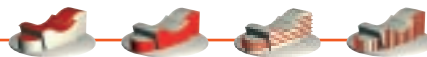
Dimensions: from 2 to 10 m

Materials • Stainless steel in matt, brushed or gloss aspect

- Coated Steel sheet
- Aluminium



TRAPEZA SYSTEM



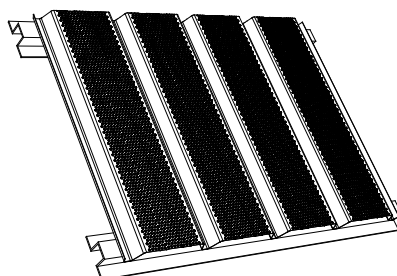
Full integration is the objective of this system. The possibilities of different shapes; combinations with opaque façades and windows; and the selection of the desired percentage of light transmission are some of the potential features.

Contact us for information on the shapes we can supply.

Dimensions: from 2 to 12 m

Materials:

- Stainless steel in matt, brushed or gloss aspect
- Coated Steel sheet
- Aluminium



Austria

ARVAL ARCELORMITTAL
CONSTRUCTION AUSTRIA GmbH
Lothringenstraße 2
A-4501 Neuhofen an der Krems
Tel. +43 72 27 52 25

Belgium

ARVAL ARCELORMITTAL
CONSTRUCTION BELGIUM
Voogdijstraat 31
B-3500 Hasselt
Tel. +32 11/286/770

Brazil

ARVAL PERFILOR S.A.
CONSTRUCOES IND E COM
Rua dos Pinheiros, 498 cj 91
Brazil 05422 000-Sao Paulo SP
Tel. +55 11 3065 3400

Czech Republic

ARVAL ARCELORMITTAL
CONSTRUCTION CZ s.r.o.
Prátelstvi 681
CZ 104 00 Praha 10
Tel. +420 272 072 020

Denmark

ARVAL HAIRONVILLE DANMARK
Taebyvej 17
DK -2610 Rodovre
Tel. +45 36 41 30 22

France

ARVAL
16 route de la Forge
F-55000 Haironville
Tel. +33 3 29 79 85 85

Germany

ARVAL ARCELORMITTAL
CONSTRUCTION DEUTSCHLAND
Münchener Straße 2
D-06796 Brehna
Tel. + 49 3 49 54 455-0

Greece

ARVAL AMC HELLAS
2nd Industrial Area
P.O. Box 1137
GR-38001 Volos
Tel. +30 24250 61 000

Hungary

ARVAL ARCELORMITTAL
CONSTRUCTION HUNGARY Kft
Váci út 184
HU-1138 Budapest
Magyarorszag
Tel. +36 1 350 2876

Italy

ARVAL Agenzia Generale per l'Italia
Via Vincenzo Bellini, 13
20124 MILANO
Tel. +39 02 79 95 68

Latvia

ARVAL ARCELORMITTAL
CONSTRUCTION LATVIA SIA
Cierkurkalna 1 linija 84-208
RIGA LV 1026
Tel. +371 674 36331



Lithuania

ARVAL ARCELORMITTAL
CONSTRUCTION BALTIC
Kirtimu g. 11
LT-02244 Vilnius
Tel. +370 5 2644 220

Netherlands

ARVAL ARCELORMITTAL
CONSTRUCTION NEDERLAND
Biezenwei 2
NL-4004 KD Tiel
Tel. +31 3 44 63 17 46

Norway

ARVAL ARCELORMITTAL
CONSTRUCTION NORGE AS
Dyrskueveien 16
N-2040 KLOFTA
Tel. +47 63 94 72 72

Poland

ARVAL ARCELORMITTAL
CONSTRUCTION POLSKA
Sp. z o.o.
Konopnica 120
PL- 96 200 Rawa Mazowiecka
Tel. +48 22 213 38 00

Portugal

ARVAL HAIRONVILLE PORTUGAL
Estrada Nacional 3 (Km 17,5)
PT-Apartado 14 2071 -909 Cartaxo
Tel. +351 263 400 070

Romania

ARVAL ARCELORMITTAL
CONSTRUCTION ROMANIA
B-dul Biruintei , nr.136
077145 Pantelimon, judetul Ilfov
Tel. +40 21 312 45 17

South Africa

Russian Federation

ARVAL COLORPROFIL ARCELORMITTAL
CONSTRUCTION MOSCOW
Business Center «Ordynka»
Bld. 4 2nd floor, of1
RU-119017 Moscow
Tel. +7 495 514 08 96

Slovakia

ARVAL ARCELORMITTAL
CONSTRUCTION SLOVAKIA s.r.o
Roznavska 24
SK-83104 Bratislava
Tel. +421 2 44 63 40 44

Spain

ARVAL ARCELORMITTAL
CONSTRUCCIÓN ESPAÑA S.L.
Carretera Guipuzcoa no 3 Km 7,5
E-31195 Berrioplano (Navarra)
Tel. +34 948 138 651

Sweden

ARVAL HAIRONVILLE SVERIGE AB
Västanvindsgatan 13
SE-652 21 Karlstad
Tel. +46 54 68 83 00

Switzerland

ARVAL ARCELORMITTAL
CONSTRUCTION SUISSE SA
Postfach-Studacherstrasse 7b
CH-5416 Kirchdorf
Tel. +41 56 296 10 10
International :
info@arcelormittal-construction.ch

United Kingdom

ARVAL ARCELORMITTAL
CONSTRUCTION UK LTD
Abbotsfield Road
Abbotsfield Industrial Park
UK St Helens, Merseyside WA9 4HU
Tel. +44 17 44 81 81 81

Caribbean:

Guadeloupe

ARVAL PROFILAGE DE LA GUADELOUPE
51 rue Henri Becquerel
ZI de Jarry
F-97122 Baie Mahault
Tel. +590 26 82 03

Martinique

ARVAL PROFILAGE DE LA MARTINIQUE
ZIP de la Pointe des Grives
F-97200 Fort de France
Tel. +596 60 60 00

Saint Martin

ARVAL PROFILAGE SAINT MARTIN
ZAC Lot 3 et 4 La Savane Activité
F-97150 Saint Martin
Tel. +590 52 98 04

Dominican Republic

ARVAL PROFILAGE DOMINICANA S.A.
Prolongacion Av. Charles de Gaulle, 131
Dominican Republic-Santo Domingo
Tel. +1 (809) 483 2790

Guyana

ARVAL HAIRONVILLE GUYANE
ZI de Degrad des Cannes - BP 418
F-97300-REMI-REMONT-JOLY
Tel. +594 25 52 81

Middle East:

United Arab Emirates

Studacherstrasse 7b
CH-5416 Kirchdorf
Tel. +41 56 296 10 10

Indian ocean:

Reunion

ARVAL PROFILAGE
DE LA REUNION
ZI N°2 -44 rue Paul Verlaine
BP 802
F-97825-Le Port CEDEX
Tel. +262 42 42 42

Mauritius

ARVAL PROFILAGE
DE L'OCEAN INDIEN
Route de la Filature
Mauritius-Riche Terre
Tel. +230 248 17 05

For other countries:

Contact :

ARCELORMITTAL CONSTRUCTION FRANCE
Export Department
16 route de la Forge
F-55000 Haironville
Tel. +33 3 29 79 85 85