

# Steel sheet piles

## AZ

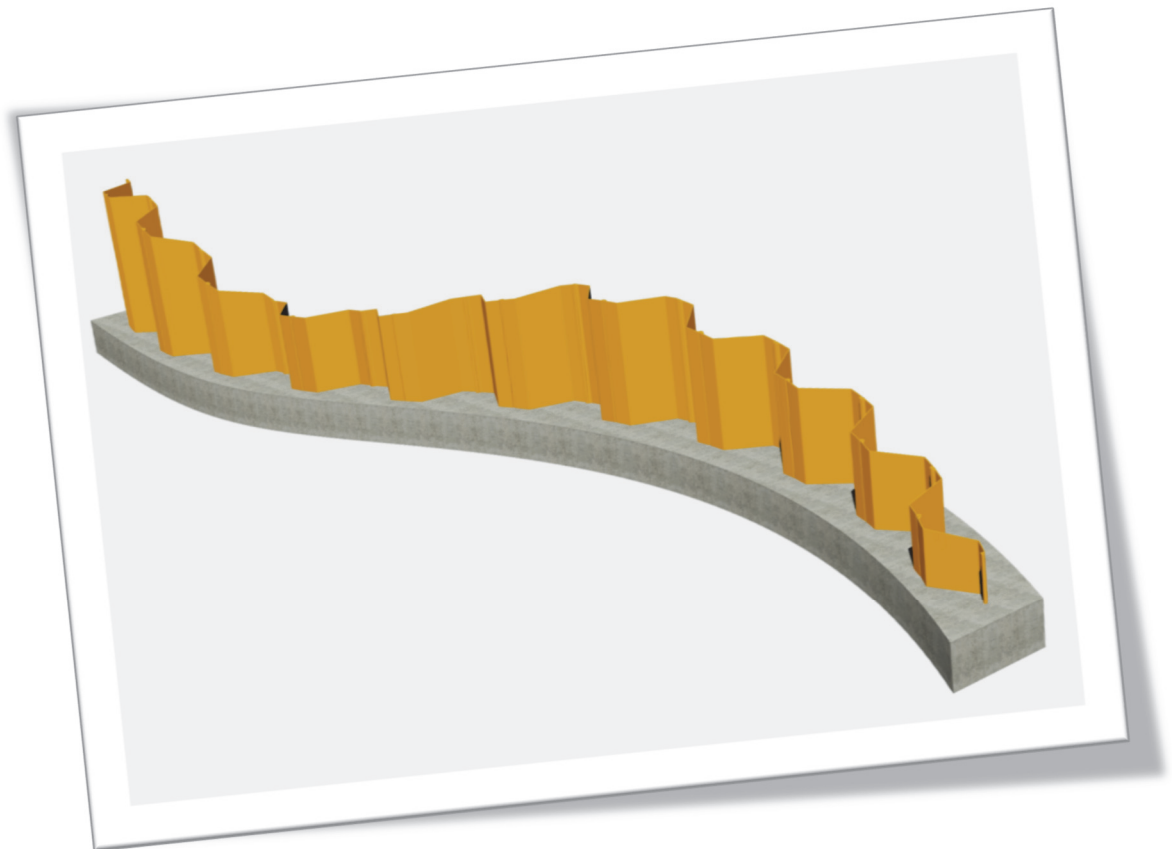
### AU / PU / GU

### AS 500

## Connectors

Family for Autodesk® Revit® 2017

Notes to users v.1.0 | June 18, 2018



Number of pages 2

## Notes

The Revit<sup>1</sup> family of steel sheet piles for standard AZ, AU, PU, GU, AS 500 & connectors is a relatively simple family, and quite straightforward to use. You just need to import one family into a project, and you can modify key parameters as length,....

The files were saved in Revit version 2017, and are also compatible with more recent software versions.

Below a few notes about the families:

- Each file of a Z or U-type section contains one profile in 4 different *forms* (double, single, ...), so that you can choose the form(s) that fit(s) your layout.
- Some variable parameters can be edited, for instance, the length of the sheet pile. The parameter *length* is positive downwards.
- You can choose the reference level for the top of the pile.
- Other variable parameters, such as available steel grades for a specific sheet pile section, can be selected from a list.
- Some parameters represent section properties, or are calculated values (i.e. mass), and should not be modified.
- Some actions, like mirroring a profile, may have an impact on the material list generated by the software (the delivery form of a mirrored sheet pile may be wrong).
- The profiles might not be visible on a plan view when you import the file into a project (choice made regarding the top of the pile). Select a 3D view or any other view.

Our technical department in Luxembourg can assist you with the layout and detailing of a sheet pile structure. This service is free of charge.

Should you have any question or suggestions, feel free to contact our engineering department at [sheetpiling@arcelormittal.com](mailto:sheetpiling@arcelormittal.com), or ArcelorMittal's local technical department.

This Revit family might not fit all the specific needs of every project. Our technical department may be able to work out a specific family for your project.

More information about steel sheet piles on our website <http://sheetpiling.arcelormittal.com>

## Disclaimer

*The data and commentary contained within this document is for general information purposes only. It is provided without warranty of any kind. ArcelorMittal Commercial RPS S.à r.l. shall not be held responsible for any errors, omissions or misuse of any of the enclosed information and hereby disclaims any and all liability resulting from the ability or inability to use the information contained within.*

*Anyone making use of this material and/or of ArcelorMittal's electronic files for Revit (.rfa files or any other file, such as libraries) does so at his/her own risk. In no event will ArcelorMittal Commercial RPS S.à r.l. be held liable for any damages including lost profits, lost savings or other incidental or consequential damages arising from use of or inability to use the information contained within.*

*ArcelorMittal's steel sheet pile range and/or Revit files are liable to change without notice.*

---

<sup>1</sup> Autodesk and Revit are registered trademarks or trademarks of Autodesk, Inc., and/or its subsidiaries and/or affiliates in the USA and/or other countries.