

### The first coating easy-to-clean

#### Aspect after the rain

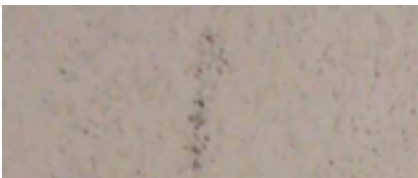


Without Hairclyn®

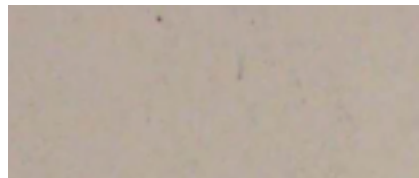


With Hairclyn®

#### Natural staining of the facade



Without Hairclyn®



With Hairclyn®

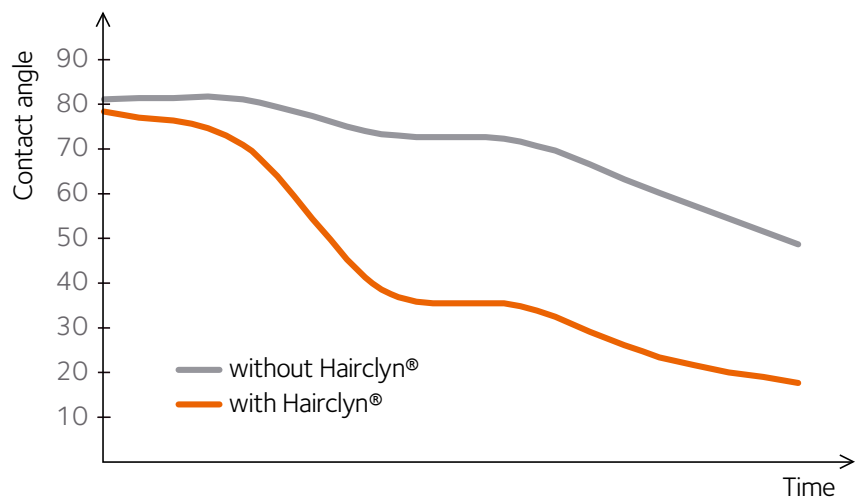
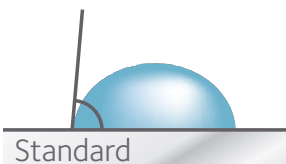
### Cleaning in the rain

#### Coating description

- > Is available in the range of the Colorissime (consult us) and has the same properties (performances and durability)
- > Is available in many colors of the Colorissime Arval by ArcelorMittal (consult us)
- > Is adapted for the whole range of the solutions Arval, for the steel thickness lower or equivalent to 1,2 mm
- > Necessitates a pre-painted steel adapted to the atmospheric conditions
- > Is not compatible with the range Naturel, Irysa®, Pearl and Intense

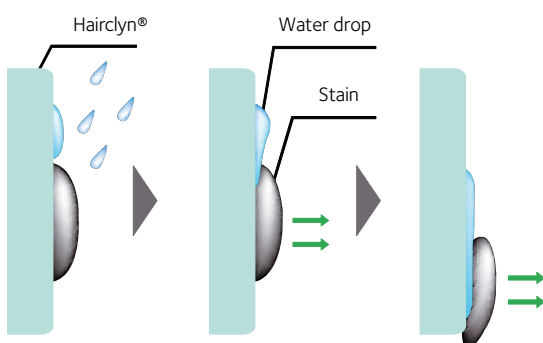
### Behavior

#### Contact angle



**Hairclyn®**, thanks to its absorbent properties, ensures a good distribution of water on all the surface. This property facilitates the cleaning by the rainwater.

Thanks to this process, your facades find their original aspects.



Hairclyn® is the aesthetics of your facade in pre-painted steel solution:

- > a high easy-cleaning effect even by the rain
- > a better resistance against pollution: the stains adhere less, are encrusted less.

Hairclyn® is always more hydrophilic than a standard pre-painted steel. This property ensures an efficient distribution of the water on the surface and facilitates the cleaning against clogging. Thanks to this process, the facades recover their original aspect.